

## Vessel Specifications



### REGISTRATION/CLASSIFICATION

Owner	TOM Kasturi Sdn. Bhd.
Operator	Two Offshore Marine Sdn. Bhd.
Flag/Port of Registry	Malaysia/Port Kelang
Year Built	2009
Builder	Muhibbah Marine Engineering Sdn Bhd
Classification	Bureau Veritas
Notation	A1 Towing Vessel FIFI 1
Call Sign/Official No.	9MRP6/336970
IMO No.	9562130

### PRINCIPAL DIMENSIONS

Length Overall	60.00 meters
Breadth	16.00 meters
Draft	4.85 meters
Depth	5.50 meters
GRT	1,669 T
NRT	500 T
DWT	1601.25 T

### MACHINERY & PROPULSION

Main Propulsion Number	2
Main Propulsion Type	Yanmar 6EY26 Marine
Total BHP	5,220
Propellers	2 x Berg CPP in fixed nozzles
Bow Thruster	1 x HRP CPP, 8T thrust
Main Generators	2 x 245kw/415V/3P/50Hz
Emergency Generators	1 x 86kw/415v/3P/50Hz
Shaft Alternator	2 x Leroy Summer 675KW

### SPEED

Max Speed	11 knots @ 100% MCR
Eco Speed	10 knots @ 85% MCR

### Cargo Capacity

Deck Space	390 m <sup>2</sup>
Deck Cargo	600 T
Deck Strength	7.0 T/m <sup>2</sup>

### Bulk Cargo Capacity

Cargo	Storage	Discharge
Fuel Oil	522m <sup>3</sup>	100 m <sup>3</sup> /hr at 90 m head
Fresh Water	500m <sup>3</sup>	100 m <sup>3</sup> /hr at 90 m head
Drill Water	550m <sup>3</sup>	100 m <sup>3</sup> /hr at 90 m head
Liquid Mud	177m <sup>3</sup>	90 m <sup>3</sup> /hr at 90 m head
Dry Bulk	170m <sup>3</sup> (4 tanks)	13 m <sup>3</sup> / min at 5.6 bar (Compressor)
Base Oil	159m <sup>3</sup>	100 m <sup>3</sup> /hr at 90 m head
Reefer Power Point		8 x 415V/3P/50Hz

### TOWING & ANCHOR HANDLING

Bollard Pull	66.0 tons
Winch Type	1 x ZICOM double drum waterfall
Line Pull	150MT
Brake Capacity	200MT
Drum Wire Cap.	1000 m x 58 mm wire
Spare reel	1 x 1000 meters
Stern Roller	3.5 m x 1.8m - SWL 200 tonnes
Shark Jaws	2 x Max. SWL 300 tons
Guide Pin	2 x Hydraulic SWL 300 tons
Tugger Winch	2 x 10 tons @ 15m/min
Capstan	2 x 6 tons @ 15m/min
Deck Crane	5T at 8m reach
Anchor	2 x 1590 kg AC14 + 1 x 1590 kg spare
Chain	2 x 14 shackles, 40 mm dia stud link K2

### NAVIGATION & COMMUNICATIONS EQUIPMENT

Doppler Speed Log	1 unit
Radar	2 x Rescue Radar Transponder (SART)
Gyro repeater	1 unit
Navtex Receiver	1 unit
E. P. I. R. B	1 unit
Auto Pilot	1 unit
GPS Navigator	2 units
Echo Sounder	1 unit
GPS	GP 150
Echo Sounder	Furuno FE 700
Walkie Talkie	4 units
AIS / SSAS	1 unit each
VHF Transceiver	4 sets

### LIFE SAVING APPARATUS

Liferafts	Total 4, capacity 100 men
Rescue Boat	1 x 25 HP OBM, capacity 6 men

### EXTERNAL FIRE FIGHTING

Capacity	2 x Kvaerner 1500m <sup>3</sup> /hr at 14 bar
Monitor	2 with remote control
Sprinkler System	FiFi Class 1 requirements
Oil Dispersant Boom	2 X Retractable
Oil Dispersant Tank	10m <sup>3</sup>

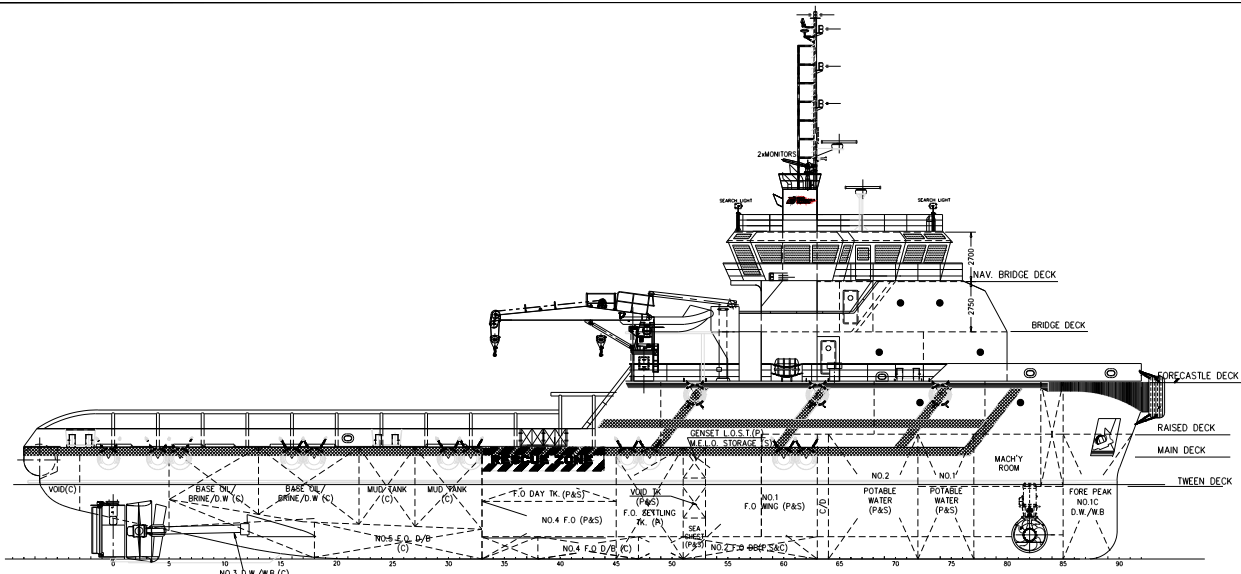
### ACCOMMODATION

Accommodation	(3 x 1-berth, 1 x 2-berth, 10 x 4-berth)
Total	1 Hospital 45 men

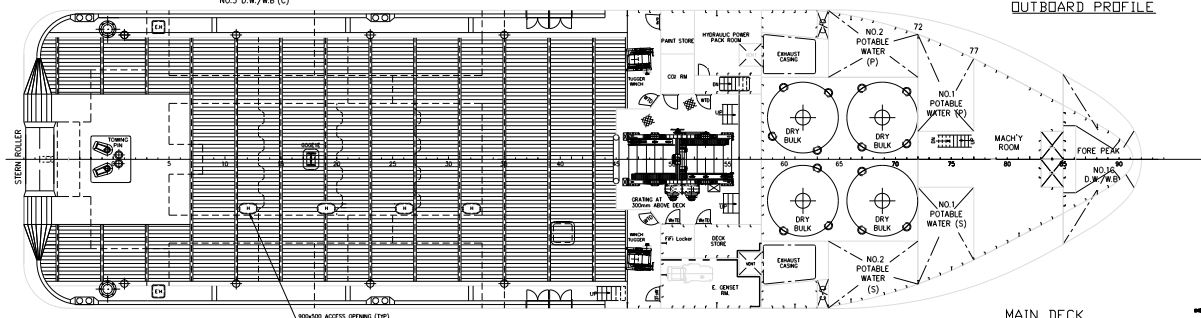
**TWO OFFSHORE MARINE SDN. BHD. (1206217-P)**

67-2, Jalan Medan Setia 1, Plaza Damansara, Bukit Damansara, 50490 Kuala Lumpur, Malaysia.

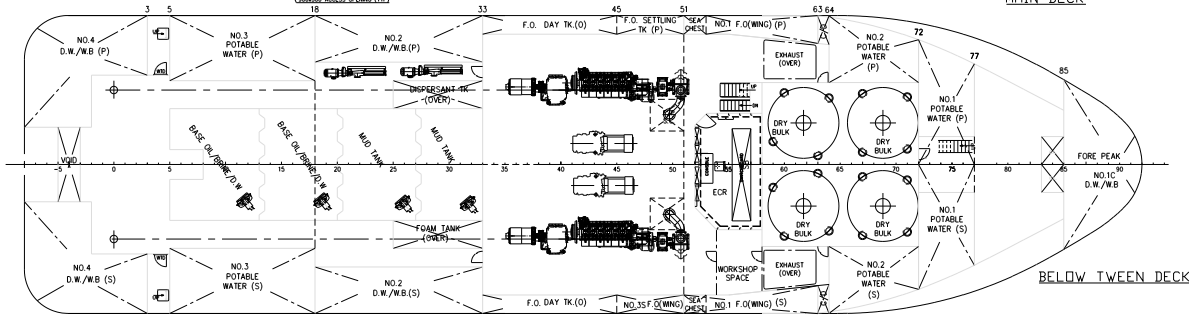
Tel: +603-2011 2271 Fax: +603-2011 2071 Email: operations@twomarine.com Website: www.twooffshore.com



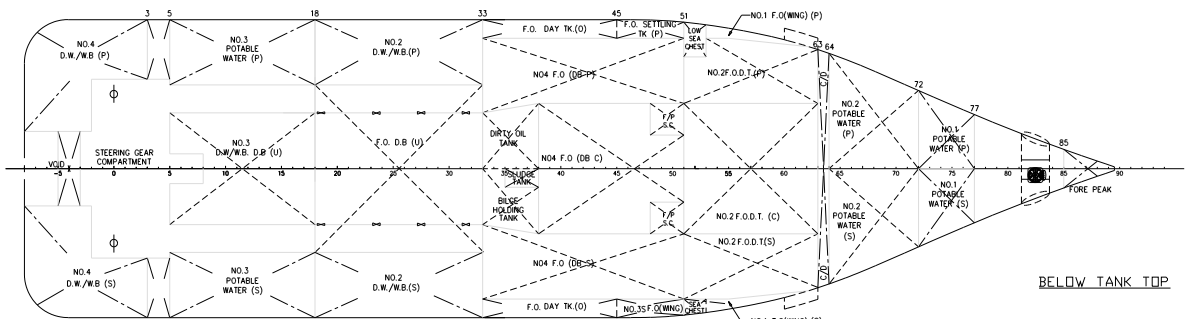
OUTBOARD PROFILE



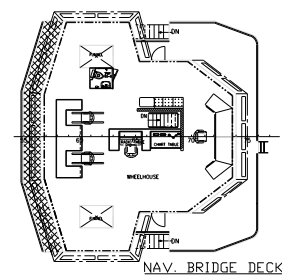
MAIN DECK



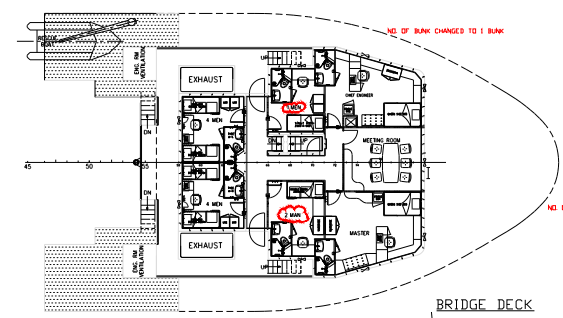
BELOW TWEEN DECK



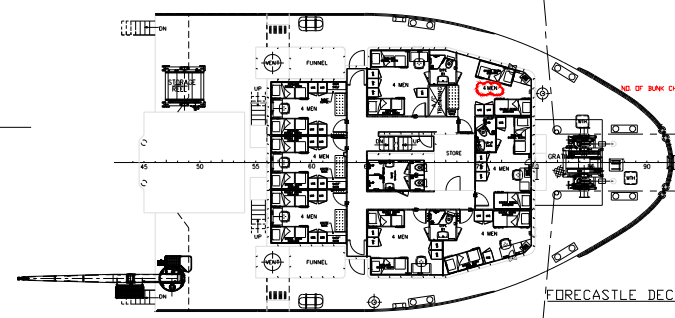
BELOW TANK TOP



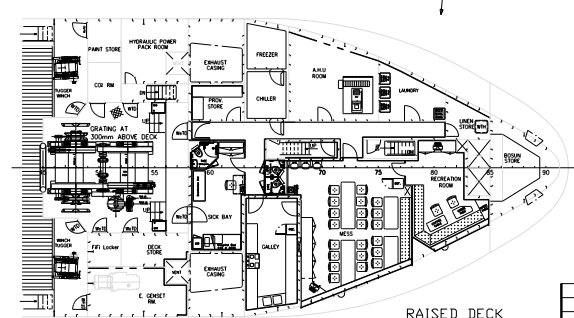
NAV. BRIDGE DECK



BRIDGE DECK



FORECASTLE DECK



RAISED DECK

**PRINCIPAL PARTICULARS**

LENGTH O.A.	60.00m
LENGTH W.L.	58.74m
BEAM MLD.	16.00m
DEPTH MLD.	5.50m
DRAFT MAX.	4.85m
COMPLEMENT	45 MEN
POTABLE WATER	500m <sup>3</sup> (Approx.)
F.O.	522m <sup>3</sup> (Approx.)
D.W./S.W.B.	550m <sup>3</sup> (Approx.)
LIQUID MUD	177m <sup>3</sup> (Approx.)
BASE OIL/BRINE/D.W.	159m <sup>3</sup> (Approx.)
FOAM	10m <sup>3</sup>
DISPERSANT	10m <sup>3</sup>
DRY BULK	170m <sup>3</sup>
DIRTY OIL	11m <sup>3</sup>
BILGE HOLDING	11m <sup>3</sup>
DECK SPACE	390m <sup>2</sup> (Approx.)
DECK LOADING	7 tonnes/m <sup>2</sup>

**Bureau Veritas Marine & Offshore**  
**Section 14402G.....**  
**VU**  
**Singapore, 18-Mar-2021**

[Electronic document]  
 The plan approval office

**See Technical Comment Doc. KL/21/00042/FIS**

DATE	MODIFICATION	REV	REV I
SHIP: 60m ANCHOR HANDLING/SUPPLY VESSEL			
TITLE: GENERAL ARRANGEMENT			
OWNER	TWO OFFSHORE MARINE		
BUILDER	MUHIBBAH MARINE ENGINEERING SDN BHD		
CLASS	BY		
DRAWN BY: LHS			
CHECKED BY: MFJ			
APPROVED BY: KMA			
SCALE: 1 : 150			
DRAWING NO.: TDMSB-GA/02			
REV: 1			

**TWO OFFSHORE MARINE**  
 43-2 B-2, JALAN NEGARA 1, BUKIT DAMANSARA, 50400  
 KUALA LUMPUR, WILAYAH PERSEKUTUAN KUALA LUMPUR  
 TEL : +603-2011 2271 FAX : +603-2011 2071 E-MAIL: operations@twooffshore.com